



ARE YOU ENGAGED?

AND WHY IT MATTERS

MAY 22, 2018





**““THE ONLY WAY TO DO
GREAT WORK IS TO
LOVE WHAT YOU DO.”**

— STEVE JOBS

How engaged are you with your job?

a)Not at all

b)Reasonably so

c)Very engaged

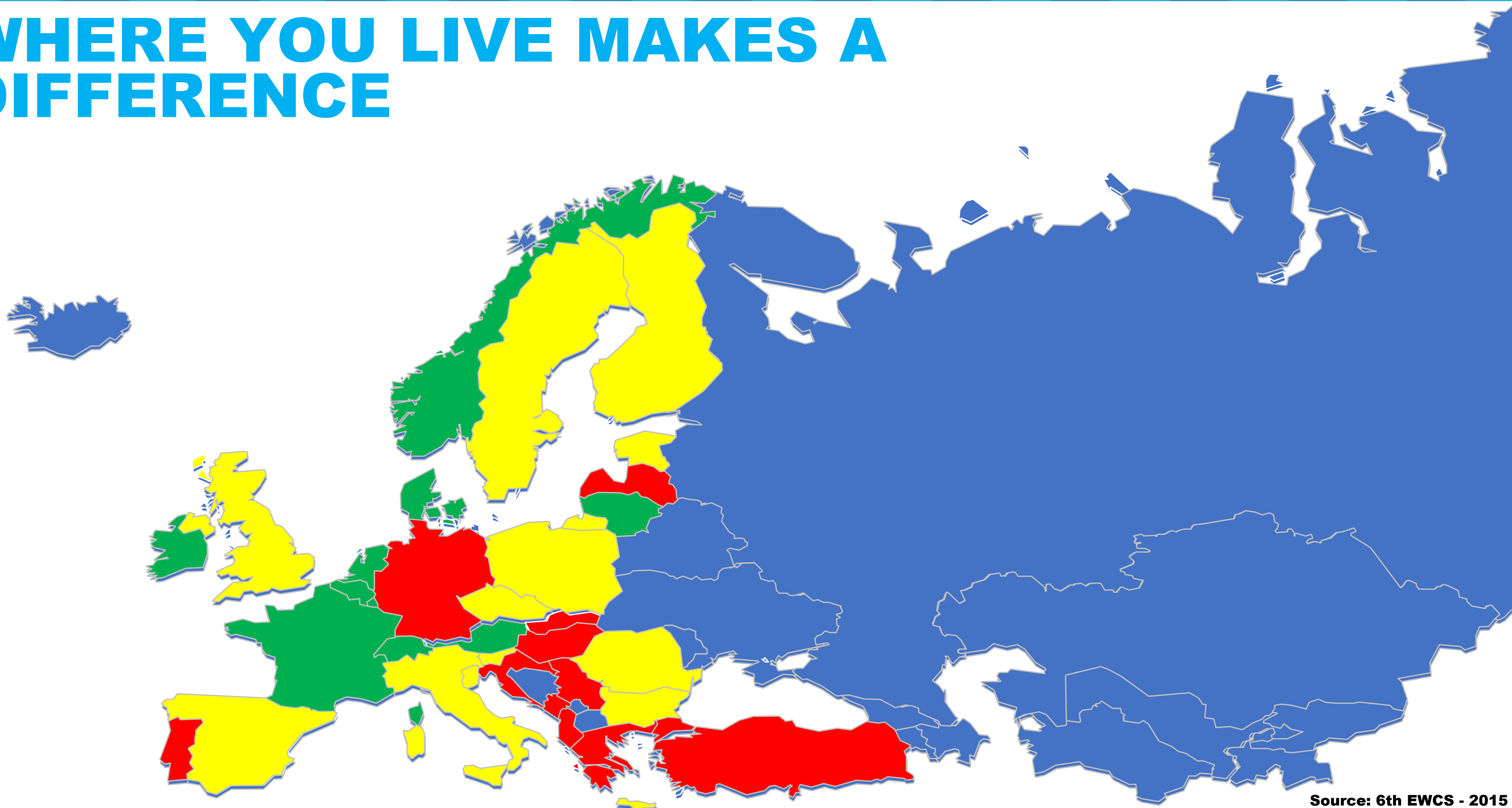


WE ARE FACING A CRISIS OF ENGAGEMENT

A top-down view of a person's feet wearing black sneakers with white laces, standing on a dark asphalt surface. A large, light-colored world map is painted on the asphalt, centered behind the person's feet. The map shows the continents of North America, South America, Europe, Africa, Asia, and Australia. The text "THE WORLD OF WORK IS EVOLVING FAST" is overlaid in the bottom left corner in a bold, blue, sans-serif font.

**THE
WORLD OF
WORK IS
EVOLVING
FAST**

WHERE YOU LIVE MAKES A DIFFERENCE



Why does it matter?



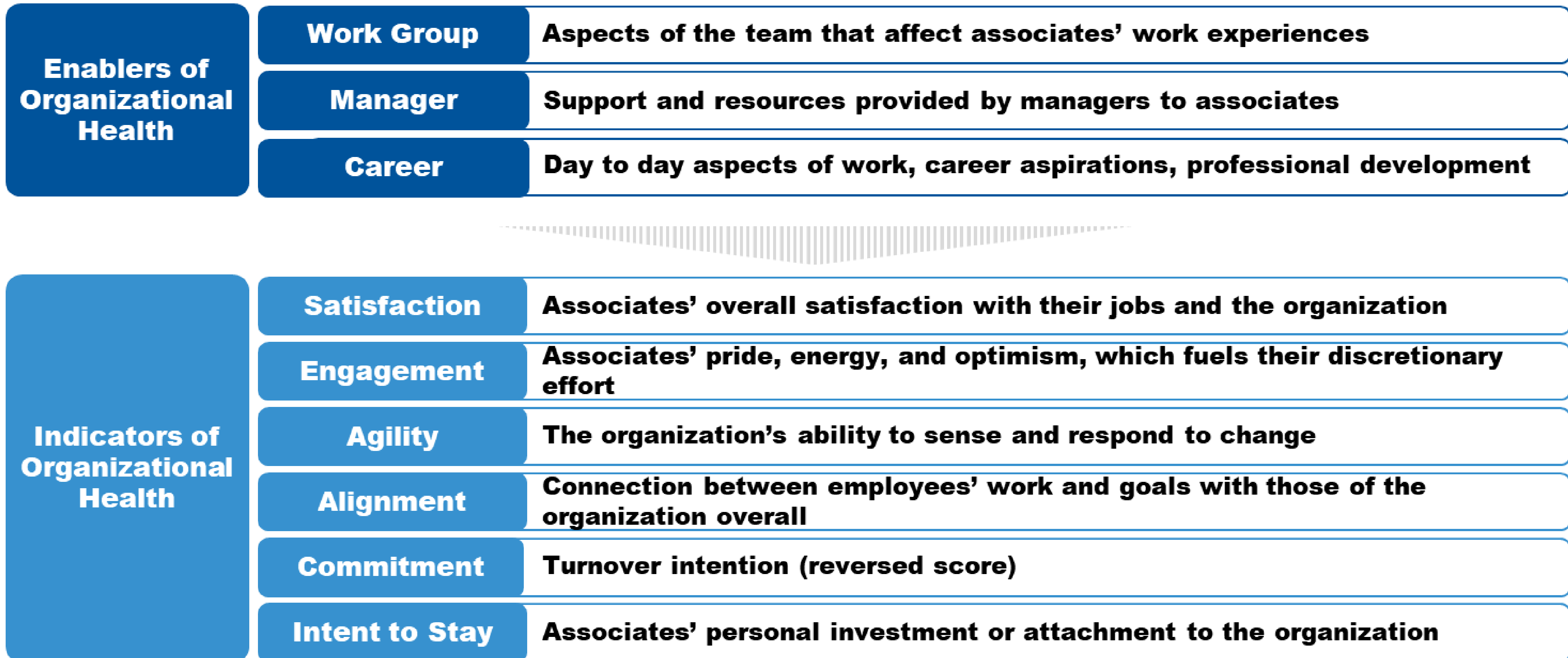
What has the biggest impact on engagement?

- a) Your fit with the environment you work in**
- b) Relationship with your manager**
- c) Opportunities to develop and grow**

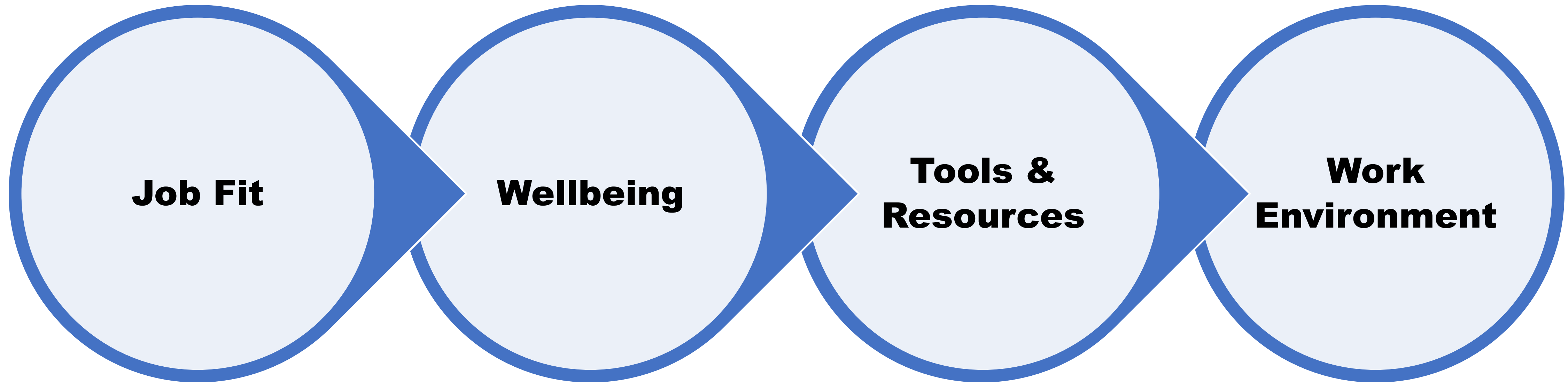


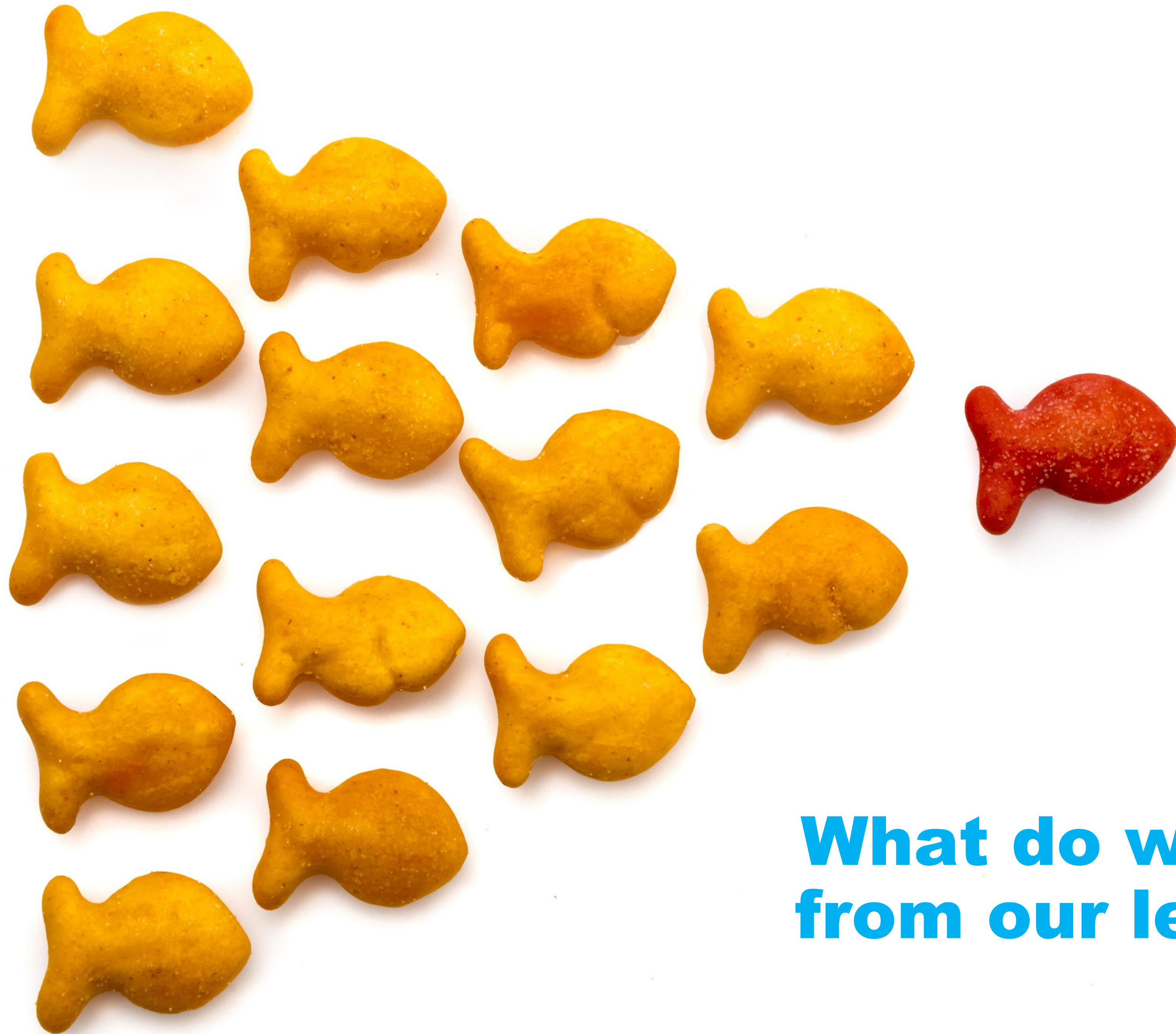
**The answer is all
of the above**

An indicator of wellbeing



Our unique experiences as employees





**What do we want
from our leaders?**



Recruit



Tools to assess external talent against benchmark

Accelerate



Assessment centre to identify future leaders

Monitor



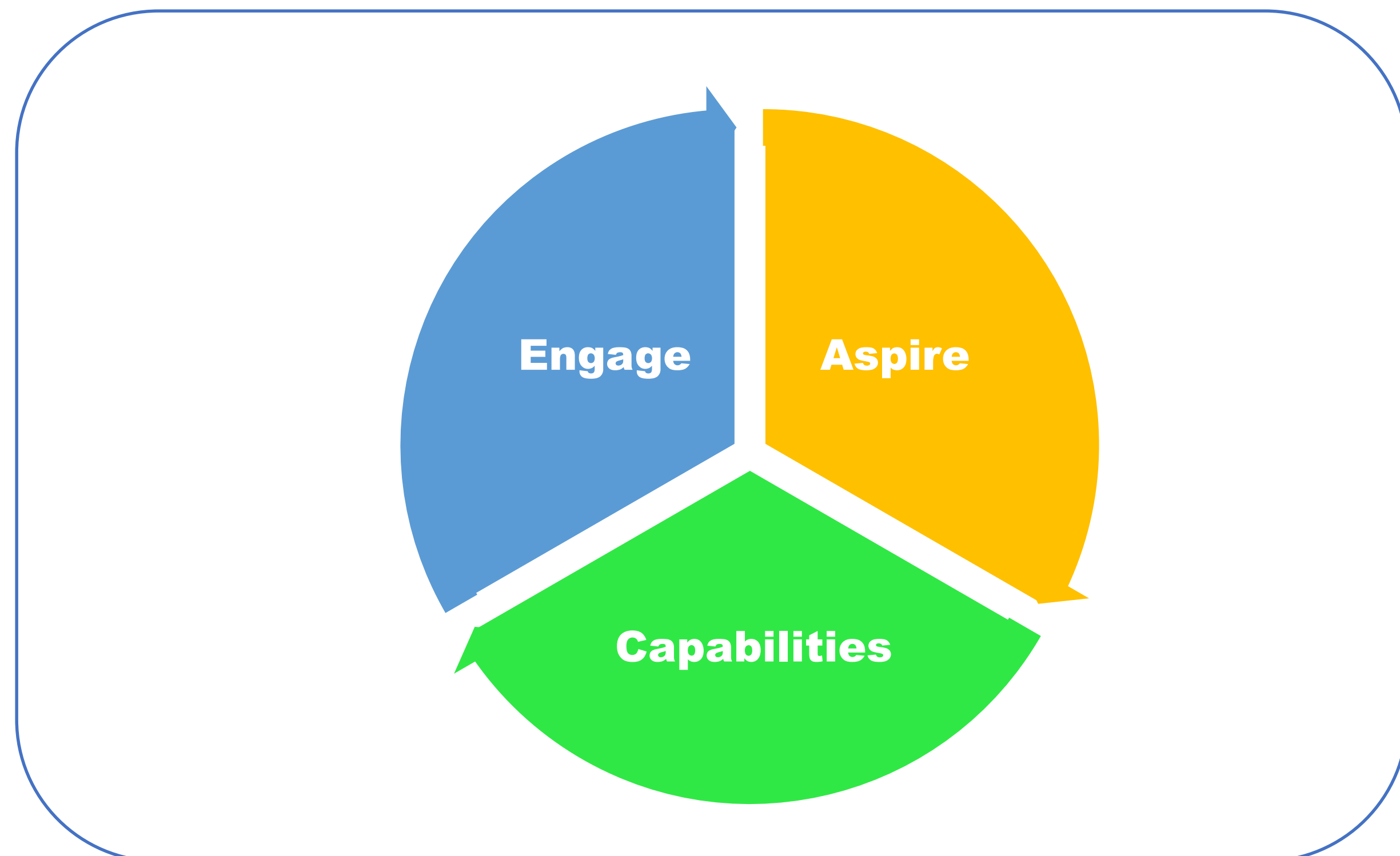
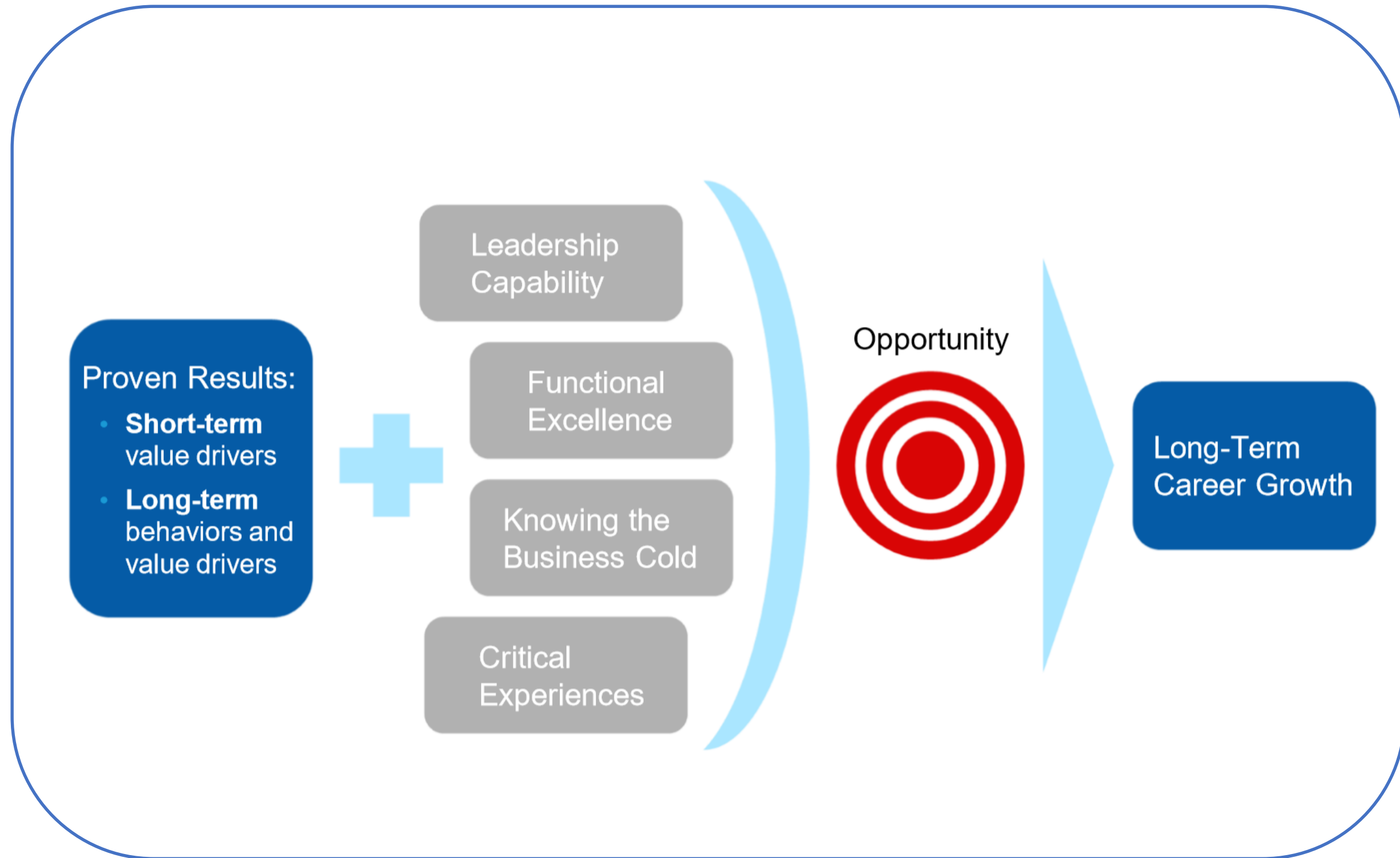
Annual feedback survey to all managers with 3+ reports

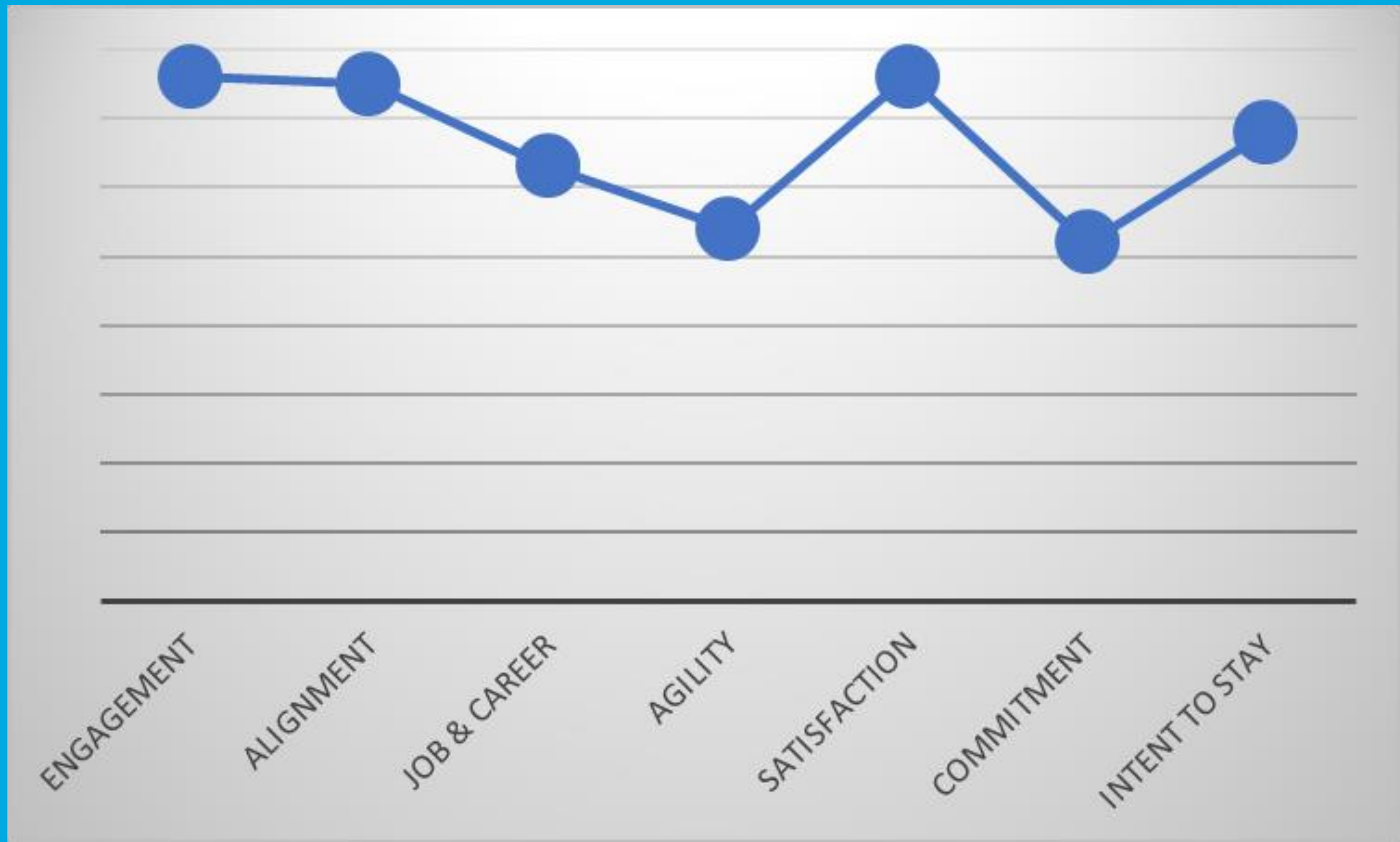
Strengthen



Interventions to build expertise

Careers in a new context





KEEP AN EYE ON THE PULSE...

... then analyse, refresh, deploy and monitor..

The background consists of a series of horizontal, wavy lines in shades of orange and yellow, creating a rhythmic, undulating pattern. The lines are evenly spaced and flow across the entire frame.

THANK YOU.